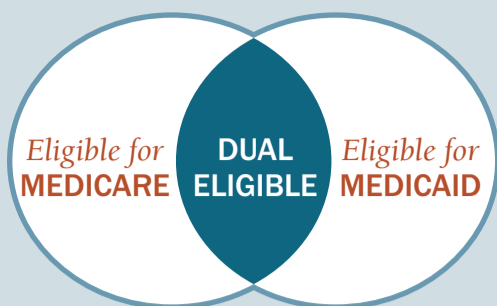


DUAL ELIGIBLE ELDERLY



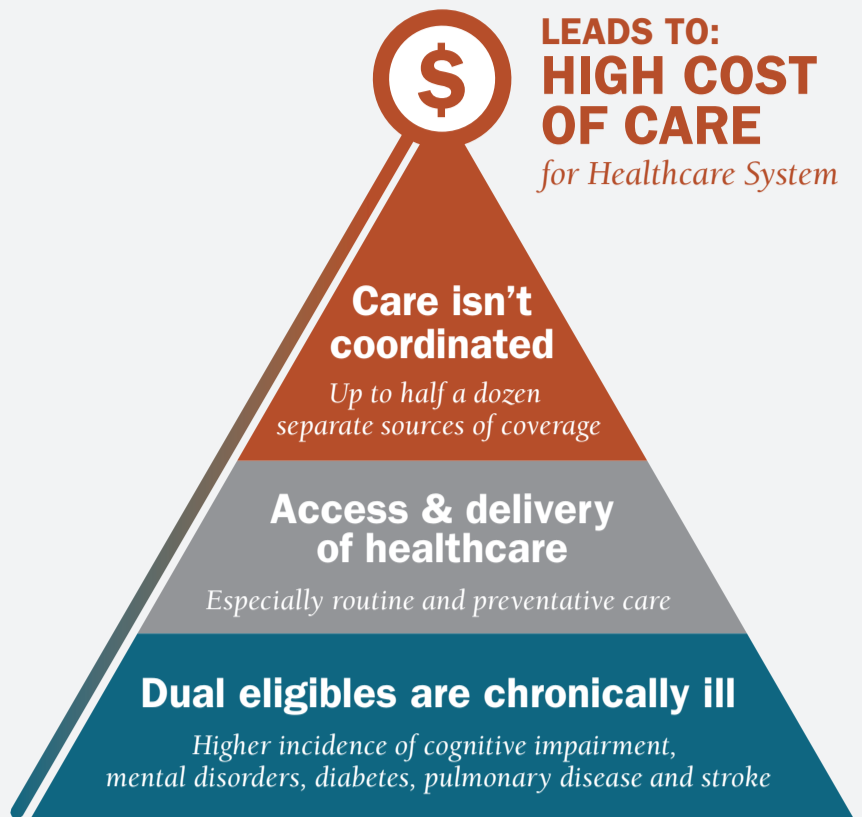
Improving the system of care for Pennsylvania's costliest Medicaid population



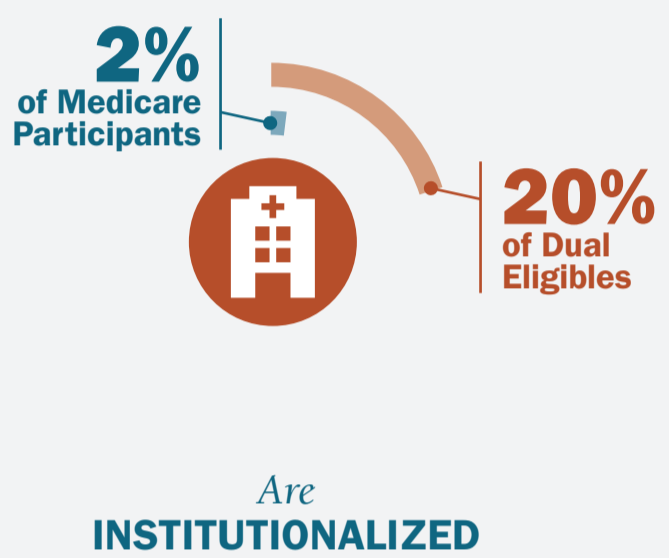
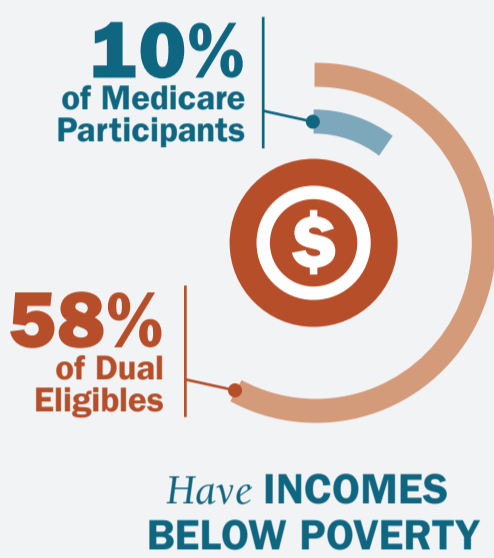
Dual eligible elderly are persons 65 years or older who qualify for both Medicare and Medicaid.

Despite comprehensive coverage for older adults who are eligible for Medicare and Medicaid, there is a lack of coordination in both access and delivery of care. This disconnect between systems causes an inflation of costs to the healthcare system at the federal and state levels.

CARE CHALLENGES FOR DUAL ELIGIBLE ELDERLY

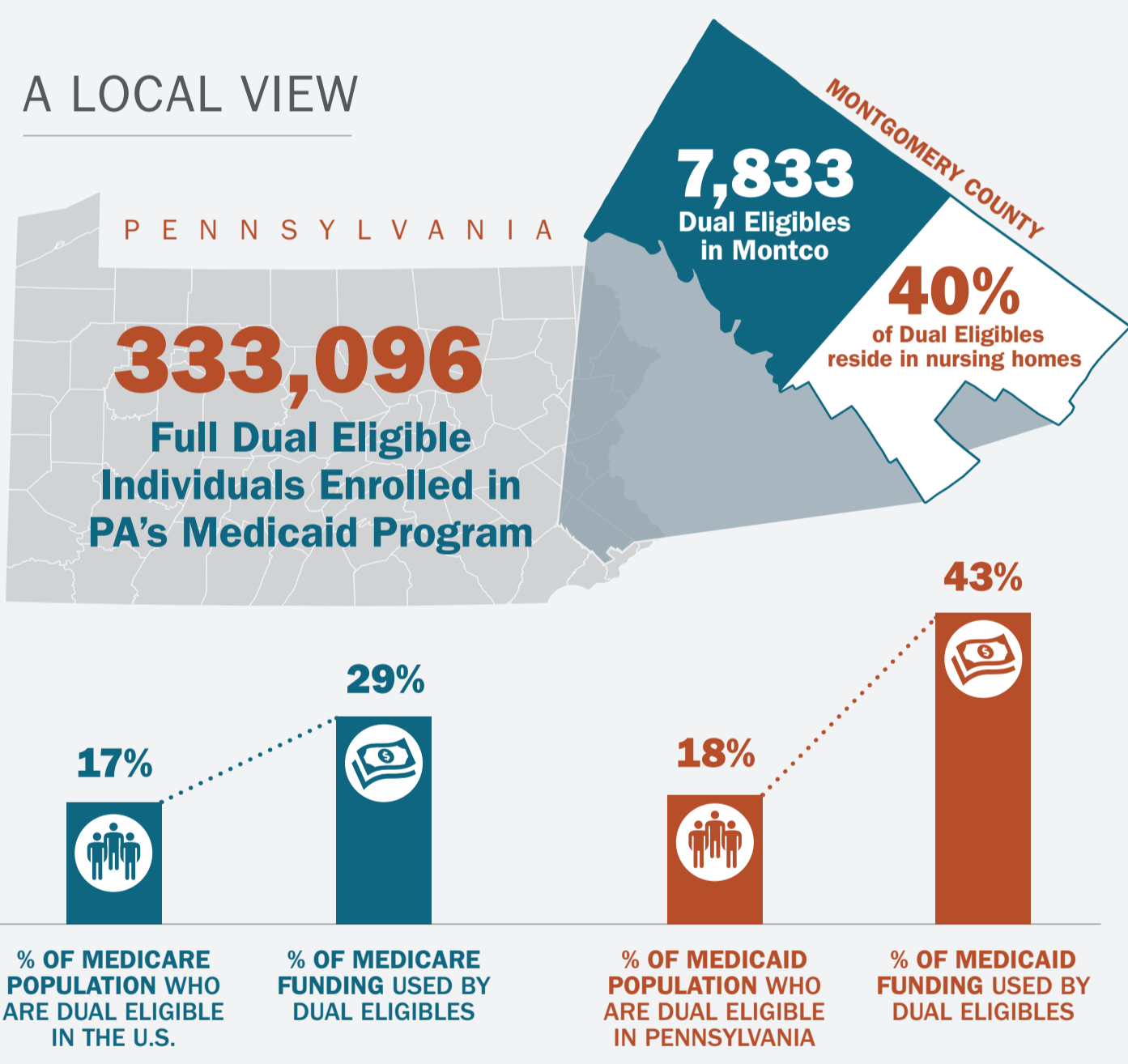


Dual eligible individuals are poorer and sicker than the rest of the Medicare population.



Dual eligible individuals represent the most costly segment of the Medicaid recipient population.

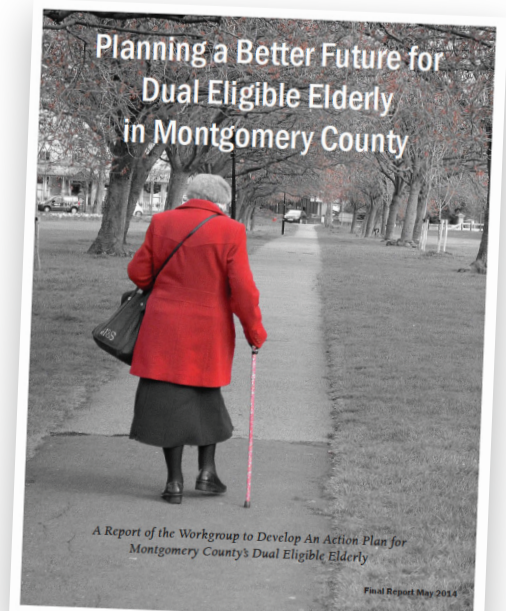
A LOCAL VIEW



Better coordinated care and better access to care improves overall health outcomes and reduces costs to the system.

How do we get there?

The high care needs of dual eligible individuals and the associated costs have driven states and the federal government to seek ways to better integrate and coordinate their care. In response, a workgroup of knowledgeable stakeholders developed a report, *Planning a Better Future for Dual Eligible Elderly in Montgomery County*, with nine systems change recommendations.



To access the full report, visit: http://npchf.org/sites/npchf.org/files/attachments/dual_eligible_report_final_2014_10.pdf

The report was made possible through a planning grant by the North Penn Community Health Foundation to the Polisher Research Institute of the Madlyn and Leonard Abramson Center for Jewish Life.

All statistics, figures and sources can be found in the report, *Planning a Better Future for Dual Eligible Elderly in Montgomery County*.